

Equipment for
x-ray therapy



ioRT-50

Efficient application for
superficial and intra-operative
x-ray therapy



WOLF-Medizintechnik GmbH



ioRT-50

Efficient application for superficial x-ray therapy

X-ray therapy units of the type ioRT-50 are intended for superficial x-ray therapy.

The unit ioRT-50 consists of a mobile trolley with a mounted x-ray tube stand. Operation is possible by an adapted touch screen panel or by a tablet pc from a distant place.

The tube head is mounted on a spring arm and able to be turned in two axis. The spring arm itself is easy to move for height setting. A clamping mechanism allows that the preselected stand position remains stable for the treatment of the standing, sitting or lying patient.

The trolley control desk contains a touch screen, an emergency switch, a key switch, an x-ray START switch and an x-ray STOP switch for use close to the device.

A separate tablet pc provides the communication with the user and allows the same operation as from the trolley control desk. That screen display shows all relevant device conditions and is as well as for the input of the treatment time.

Overview

- mobile unit
- near and distant ways to run the device
- high capacity offline cooler (water-water buffer)
- circular, open applicators, FSD 15 and 30 mm
- microprocessor controlled
- service software with remote access



Open applicator for skin treatment

Technical Data	ioRT-50
Max. high tension [kV]	50
Max. tube current [mA]	8
Max. power [W]	500
Two circuit cooler	water - water
Number of selectable energies (combined of filter, [mA], [kV])	1 (fixed)
Open Applicator - Focal skin distance [mm]	15, 30
Mains	1~PEN 230 V AC, 10 AT
Stand variation	Mobile trolley with tube arm

WOLF-Medizintechnik GmbH

Am Wachtelberg 15, 07629 St. Gangloff, Germany
 Phone: +49 (0) 36606 60441, Telefax: +49 (0) 36606 60442
info@womed.net, www.womed.net



WOLF-Medizintechnik GmbH



ioRT-50

Efficient application for
intra-operative x-ray therapy

X-ray therapy units of the type ioRT-50 are for the delivery of intra-operative radiation therapy (IORT) to tumors and tumor beds following re-section.

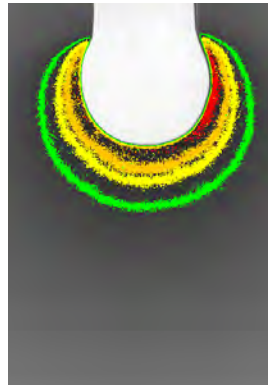
The transmission target tube design allows to reach the treatment area easily.

The mobile trolley is designed for the use inside the operation theatre. All components are inside the trolley cover. For the intra-operative use the cooling system could be prepared before to run offline during one whole treatment procedure.

A set of steam sterilizable spherical applicators allow a precise adaptation to the target.

The dose delivery is homogenous around the spherical surface. The high dose rate ensures short treatment times.

spherical applicators dose distribution



Technical Data	ioRT-50
Max. high tension [kV]	70
Max. tube current [mA]	7
Max. power [W]	500
Two circuit cooler	water - water
Number of selectable energies (combined of filter, [mA], [kV])	1 (fixed)
Spherical Applicator diameter [mm]	35 – 40 – 45 – 50 – 55 – 60
Mains	1-PEN 230 V AC, 10 AT
Stand variation	Mobile trolley with tube arm

WOLF-Medizintechnik GmbH

Am Wachtelberg 15, 07629 St. Gangloff, Germany
 Phone: +49 (0) 36606 60441, Telefax: +49 (0) 36606 60442
info@womed.net, www.womed.net



WOLF-Medizintechnik GmbH