

CT Simulation

CT Simulation Skin Markers

Save time and increase accuracy during treatment planning with Beekley Medical's non-metallic CT-SPOT® pellets, crosshair, and line.

Beekley Medical's CT-SPOT skin markers are ideal for marking a variety of specific points of reference and other areas of concern. Unique non-lead pellets, crosshairs, and lines image brightly during simulation without streaking and are designed not to move or shift during positioning.

CT-SPOT®

REF 119 QTY 85/box

- 2.3mm non-metallic pellet
- for 3-point set-ups and isocenters



CT-SPOT®

REF 120 QTY 85/box

- 4.0mm non-metallic pellet
- for 3-point set-ups and isocenters



CT-SPOT®

REF 123 QTY 50/box

- 2.0cm x 2.0cm non-metallic crosshair
- for 3-point set-ups, isocenters and field borders



CT-SPOT®

REF 118
QTY 320cm cut to measure roll/box

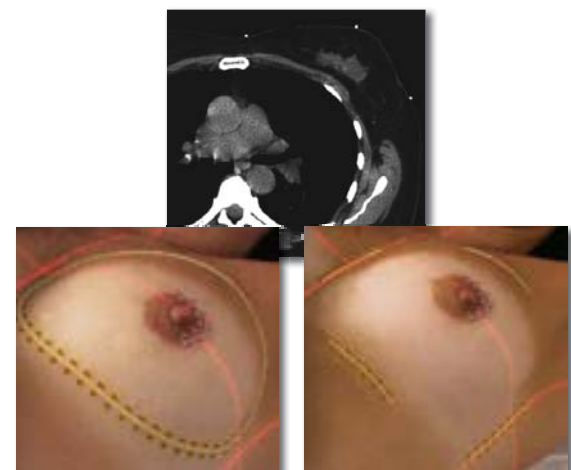
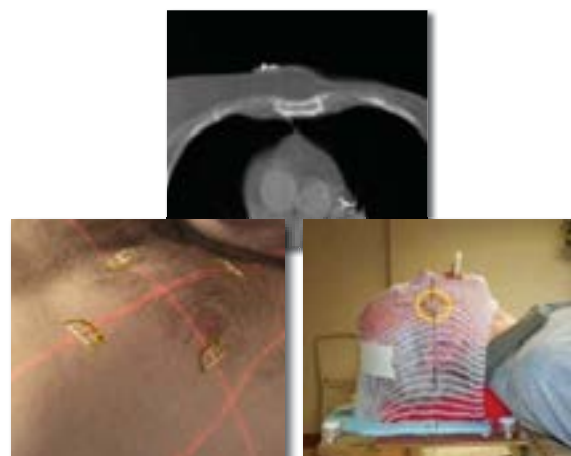
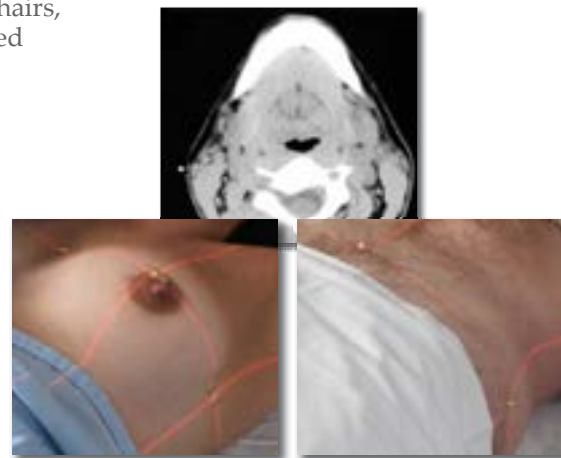
- 2.0mm diameter non-metallic line
- for marking scars and field borders



S-SPOT®

REF 607 Florals®
QTY 363cm cut to measure roll/box

- .33mm diameter metallic line
- burnout-resistant brighter image
- for marking scars and field borders



products on this page shown actual size

Visit www.beekley.com for additional Product Safety Related Information.