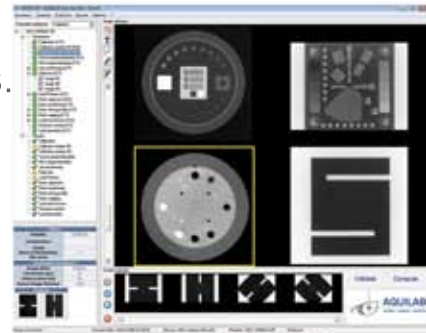


# Radiation Oncology QA Modules

## The software suite for complete RT Quality Assurance

ARTISCAN RT modules are designed for the QA of all components of Radiation Oncology equipments. DICOM 3 and DICOM RT files are automatically analyzed to provide accurate measurements, monitoring, and follow-up of key parameters.



### Portal Imaging

#### Measured parameters

- Pixel size
- Noise, SNR, Homogeneity
- Spatial linearity
- Signal linearity
- Contrast resolution...



#### Supported phantoms

- AQUILAB calibration phantom
- Las Vegas
- PTW EPID QC



### IGRT

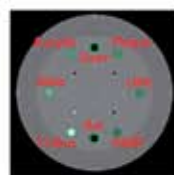
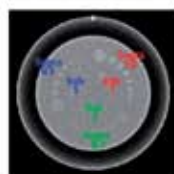
#### 2D kV Orthogonal Imaging 3D kV & MV CBCT

#### Measured parameters

- Alignment
- Noise, SNR, Homogeneity
- Image geometry
- Signal linearity
- Contrast resolution
- Slice thickness
- Table motion
- Low contrast sensitivity
- Spatial resolution
- CT number linearity
- CT/CBCT coincidence...

#### Supported phantoms

- CATPHAN® 500, 503, 504, 600
- Leeds TOR18FG
- DIN 13 phantoms

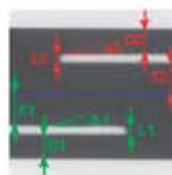


### Multileaf Collimator

Based on Portal Images analysis

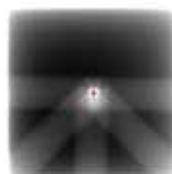
#### Measured parameters

- Field size
- Collimator rotation
- Leaves-positioning, alignment & orthogonality (Picket Fence included)
- Jaws-positioning
- Leakage, transmission, penumbra
- Dose homogeneity (VMAT)



#### Supported MLCs

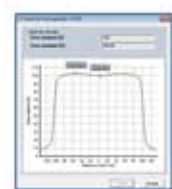
- Elekta 80 leaves MLCi & MLCi2, Agility™, Beam Modulator®
- Siemens 58, 82 leaves, 160 MLC™
- Varian Millennium™ 80 MLC, 120 MLC, HD120® MLC
- Brainlab m3® High Resolution MLC



### LINAC

#### Isocenters QA

- Gantry, Collimator, Couch isocenter
- 2DkV/MV & 3DkV-CBCT/MV coincidence



#### Supported phantoms

- Ball Bearing Phantoms
- QUASAR™ Penta-Guide Phantom
- CIRS ISO Cube™

#### Integrated LINAC QA management

- Dose monitoring, Security systems
- Beam characteristics...

#### Supported equipments

- Water Tanks
- 2D Arrays

The parameters computed by the system very much depend on the type of phantoms used.  
New modules are regularly developed to handle new test objects and phantoms.  
Please send us your enquiry for an updated list of supported phantoms.